

SHOTCRETE

CASE STUDY



Works were carried out to the perimeter walls of the primary settlement flow splitter chambers. The existing concrete had been damaged and reduced by the local environment. Reinforcement was exposed and damaged in some areas.

SSLs remit was to repair the damaged areas.

CLIENT

Marval Marine Services

LOCATION

Hastings, Kent

COMPLETION DATE

2025

SECTOR

Marine

www.shotcrete.co.uk



CHALLENGE/ SCOPE

5 no separate chambers required remedial works. Only one of these could be made available at any time.

The client installed access to the chamber and cleaned the surfaces of effluent material.

One week was allowed for each chamber so co-ordination was important. The hydrodemolition team were booked for Tuesday / Wednesday each week.

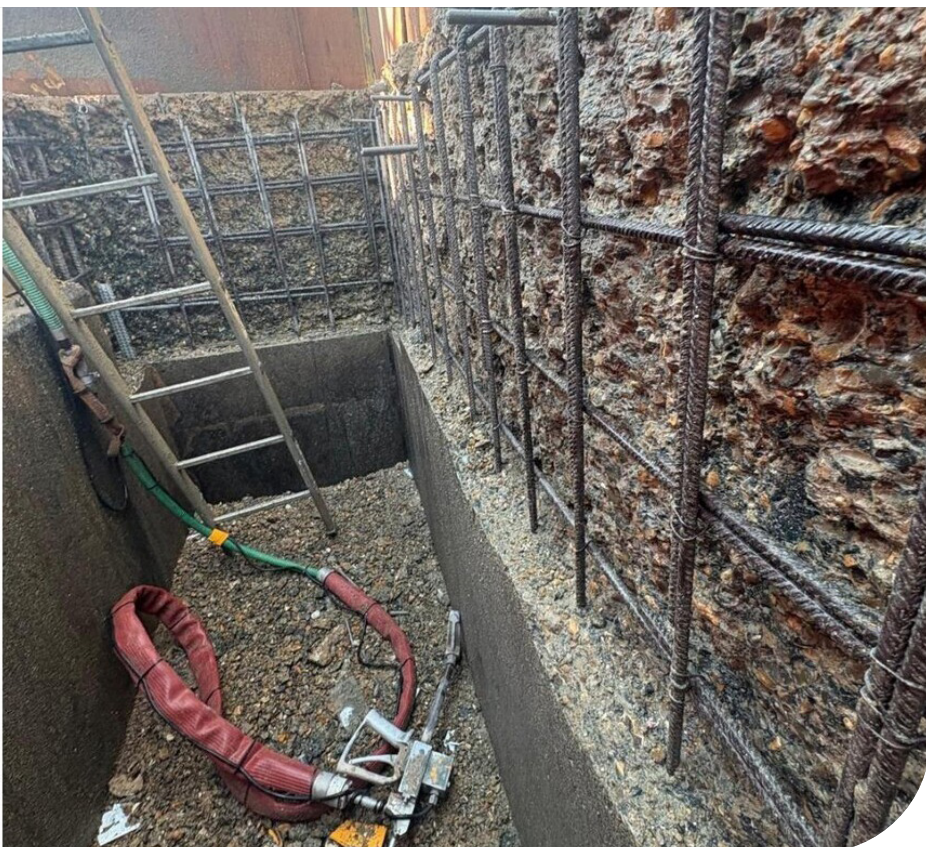
SSL and the client prepped on Monday. Hydrodemolition on Tuesday / Wednesday. Formwork and rebar remedials on Wednesday / Thursday. Concrete spray and finish on Thursday afternoon. Strike and clear on Friday.

PROCESS



5NO CHAMBERS WERE REPAIRED:

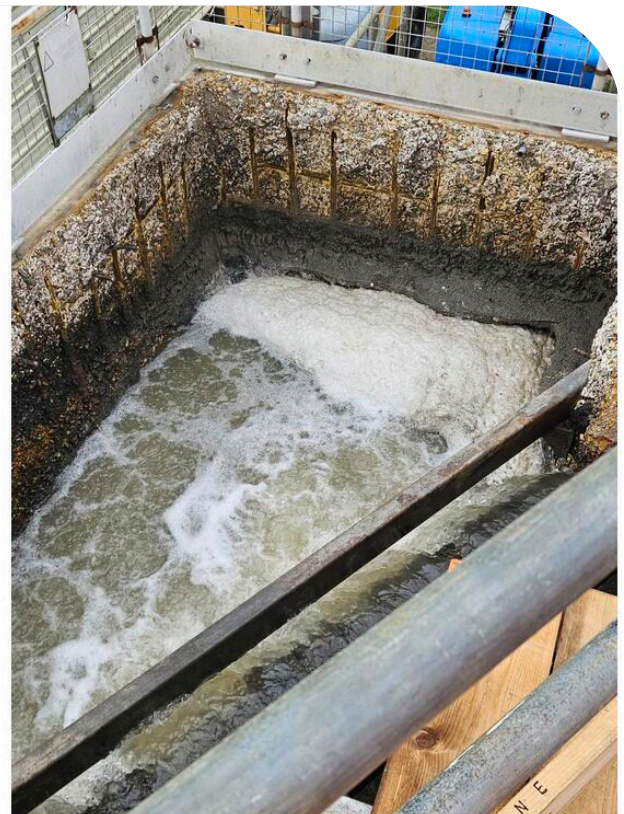
- the compromised areas were agreed and marked out
- hydrodemolition was used to remove the surface concrete and expose the front layer of reinforcement
- damaged reinforcement was replaced
- dry-spray concrete material (Fosroc Renderoc DSR) was used to reinstate the walls.



CONCLUSION/ SOLUTION/ OUTCOME



The system worked well and the 4-man team did a great job.
Hygiene is very important in this environment.
The welfare unit needs to be efficient.



MATERIALS USED

RGL carried out the hydro-demolition. They performed well.

Water was supplied from an adjacent hydrant. This was very useful although we had IBCs on site which the forklift would have transferred to be filled elsewhere if required.

We used Renderoc DSR which is a rapid strength material. We needed a fast curing concrete due to the quick turn around and the aggressive wet environment once the chamber is refilled.



WHAT OUR CLIENTS HAVE TO SAY:

Mario and the lads on site were excellent all round in their professionalism, H&S, attitude et al.
We look forward to the next one!

Marval Marine Services

THANK YOU

FOR YOUR INTEREST IN SHOTCRETE.

SHOTCRETE

CONTACT US:

Shotcrete Yard
Swattenden Lane
Cranbrook, Kent
TN17 3PS

Telephone: +44 (0) 1580 714747
Email: enquiries@shotcrete.co.uk



www.shotcrete.co.uk